

Anti-H_ALCAM(CD166) hIgG1 Reference Antibody (Pralbio)

Product Information

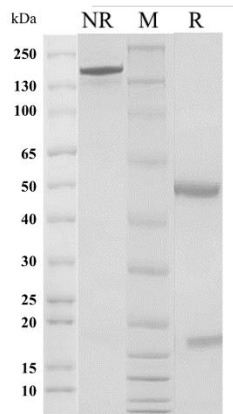
Product Name	Anti-H_ALCAM(CD166) hIgG1 Reference Antibody (Pralbio)
Storage temp.	Store at 2-8°C short term (1-2 weeks).Store at ≤ -20°C long term. Avoid repeated freeze-thaw.
Catalog# / Size	GM-87718MAB-1mg / 1 mg GM-87718MAB-5mg / 5 mg GM-87718MAB-25mg / 5 mg*5 vials GM-87718MAB-50mg / 50 mg GM-87718MAB-100mg / 50 mg*2 vialse

Antibody Information

Expression System	CHO
Aggregation	< 5% as determined by SEC-HPLC
Purity	> 95% as determined by SDS-PAGE
Endotoxin	< 1 EU/mg, determined by LAL gel clotting assay
Sterility	0.2 μm Filtered
Target	ALCAM(CD166)
Clone	praluzatamab
Alternative Names	ALCAM; MEMD
Source/Isotype	Human IgG1, D356E/L358M, Kappa
Application	Bioactivity-ELISA
Description	This gene encodes activated leukocyte cell adhesion molecule (ALCAM), also known as CD166 (cluster of differentiation 166), which is a member of a subfamily of immunoglobulin receptors with five immunoglobulin-like domains (VVC2C2C2) in the extracellular domain. This protein binds to T-cell differentiation antigene CD6, and is implicated in the processes of cell adhesion and migration. Multiple alternatively spliced transcript variants encoding different isoforms have been found.
Formulation	phosphate-buffered solution, pH 7.2-7.4.

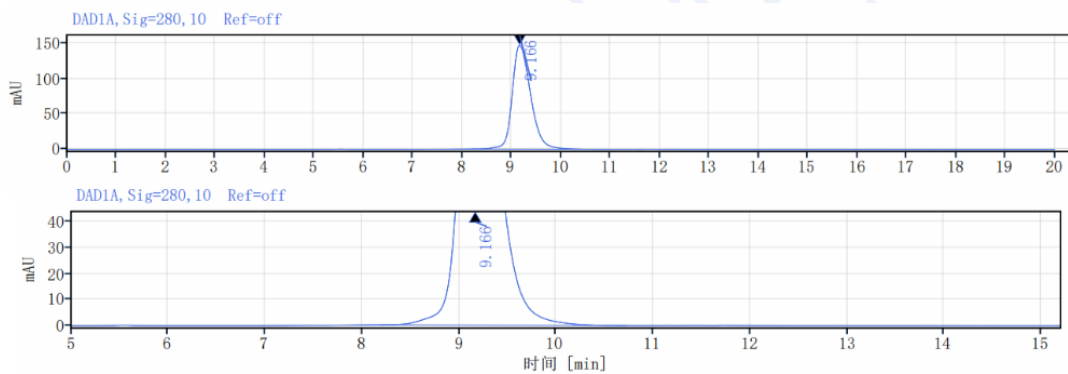
Data Examples

SDS-PAGE



On SDS-PAGE under reducing (R)/non-reducing(N-R) condition. The purity of the protein is greater than 95%.

SEC-HPLC



The purity of this product is more than 95% verified by SEC-HPLC

Bioactivity-ELISA

Human CD166 Protein; His Tag (Catalog # GM-84571RP) was immobilized at 5 µg/ml (100 µL/well). Increasing concentrations of Anti-H_ALCAM(CD166) hIgG1 Reference Antibody (Pralbio) (Catalog # GM-87718MAB) were added.

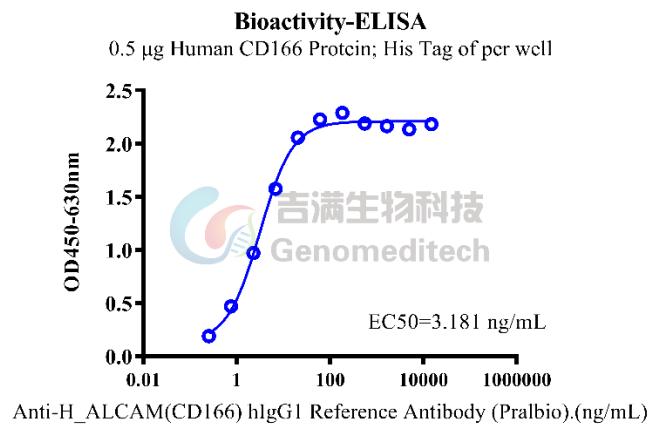


Fig. Assay

Version:3.3